

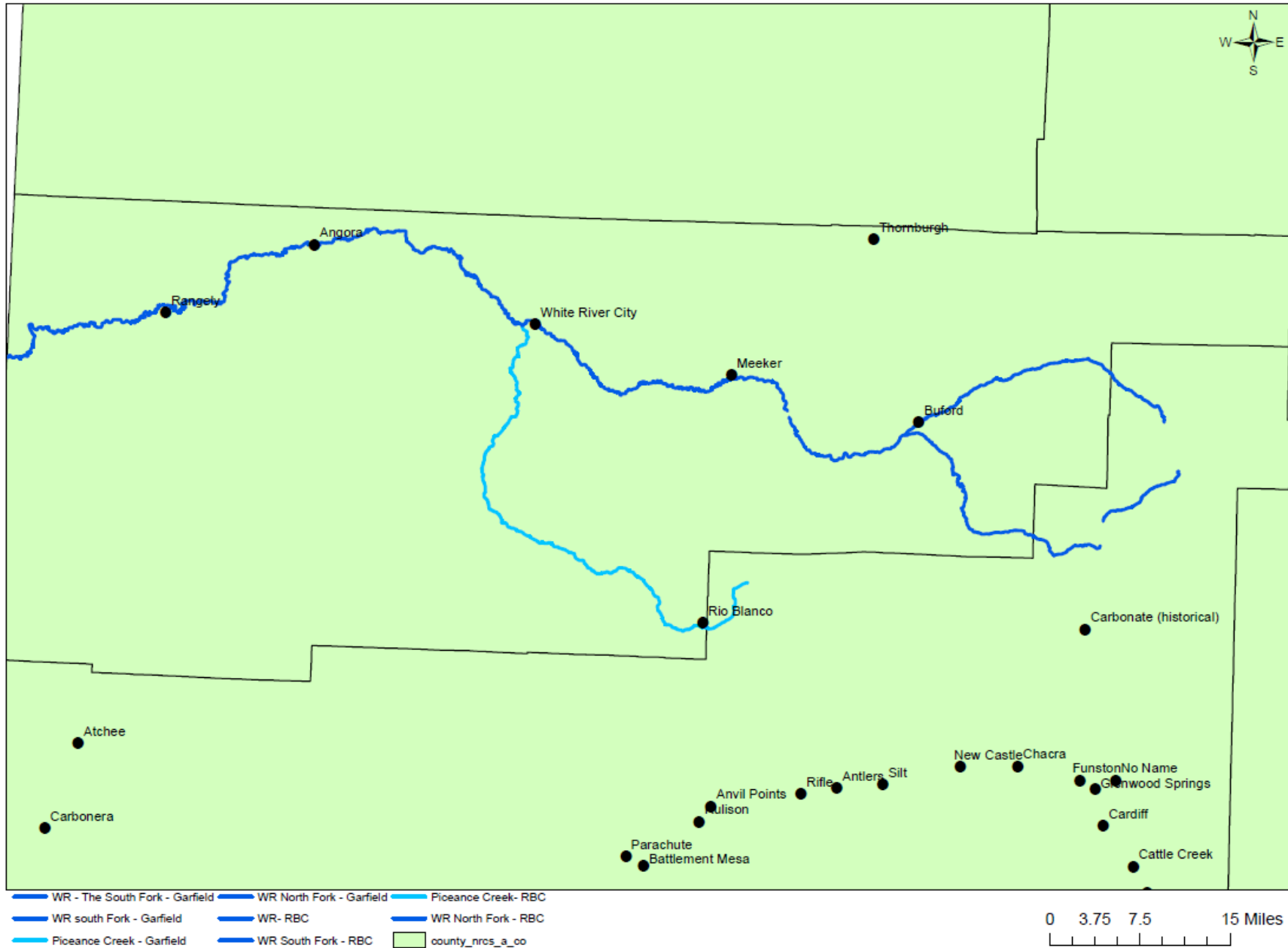
Diversion Structure Committee: Selection and Assessment

White River Integrated
Water Initiative
March 25, 2021

Maps

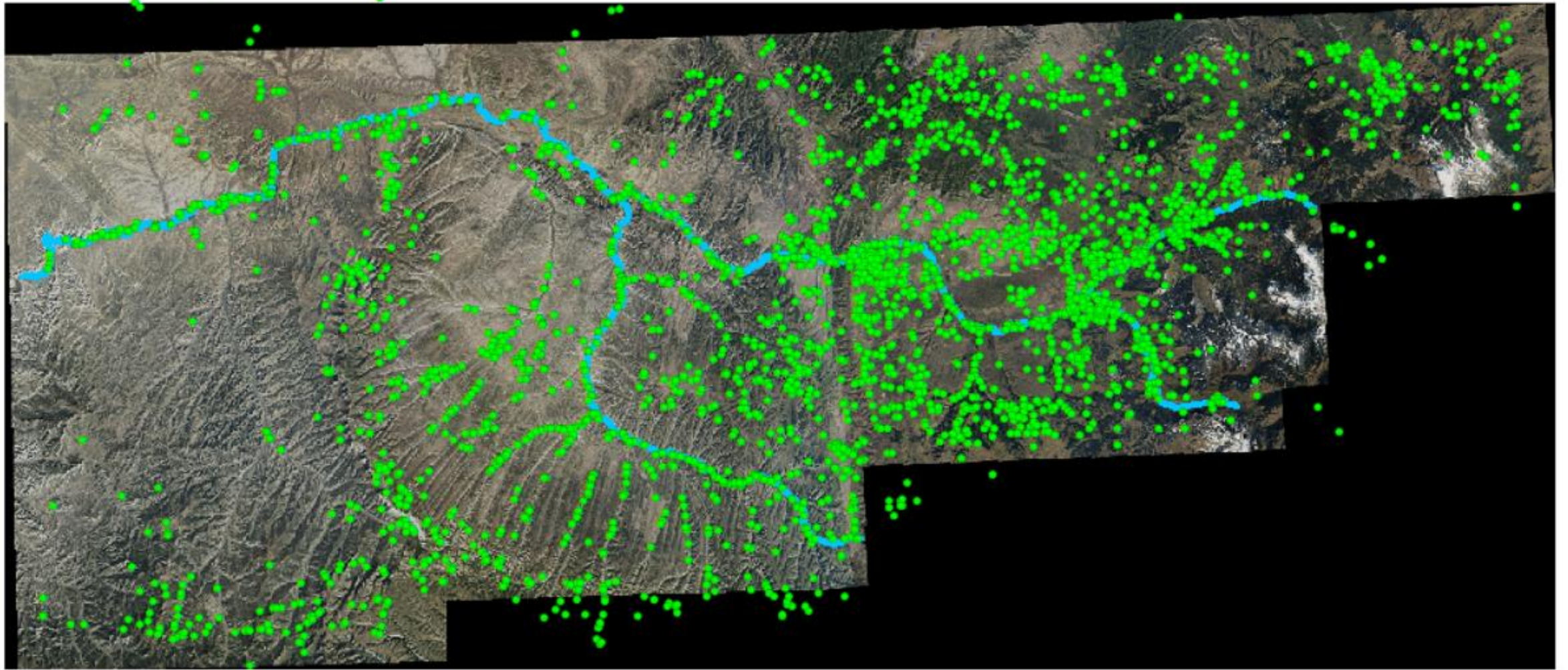


White River Main-Stem and Piceance Creek





White River Initiative: Reaches



Río Blanco County Diverción Points

Diversión
Structure
Selection



Selection Background

- Starting with twenty total assessments
 - (4 Reaches x 5 Diversions)
- Each reach has unique characteristics
 - Therefore, recommendations for reach selections are different
- Selection criterion have been an evolving process

General Diversion Structure Selection Criteria

1. Structure Size
2. Water Right Date
3. Self – Named or Volunteered
4. Non- Consumptive Needs (As Needed)

Selection Recommendation – Upper Reach

- The Diversion Committee recommends prioritizing the largest or volunteered structures on the Upper Reach of the River.



Selection Recommendation- Middle Reach

- Diversion Committee recommends selecting structures in the Middle Reach based on their size.
- The largest structures have higher preference during scheduling and completing of inventory work.
- Examples: Miller Creek, Highland, Oak Ridge, Agency, Powell Park, Niblock.


Selection Recommendation- Lower Reach

- Diversion Committee recommends using diversion size as the main selection criteria on the Lower Reach.
- Most diversion points in this reach will be pumps.



Selection Recommendation- Piceance Creek

- The Committee recommends using the most senior water rights on Piceance Creek to select diversions for assessment.
- Piceance Creek has had more calls or jurisdiction issues historically and usually has less water than is needed to meet annual demand.



Diversión
Structure
Assessment

Assessment Background

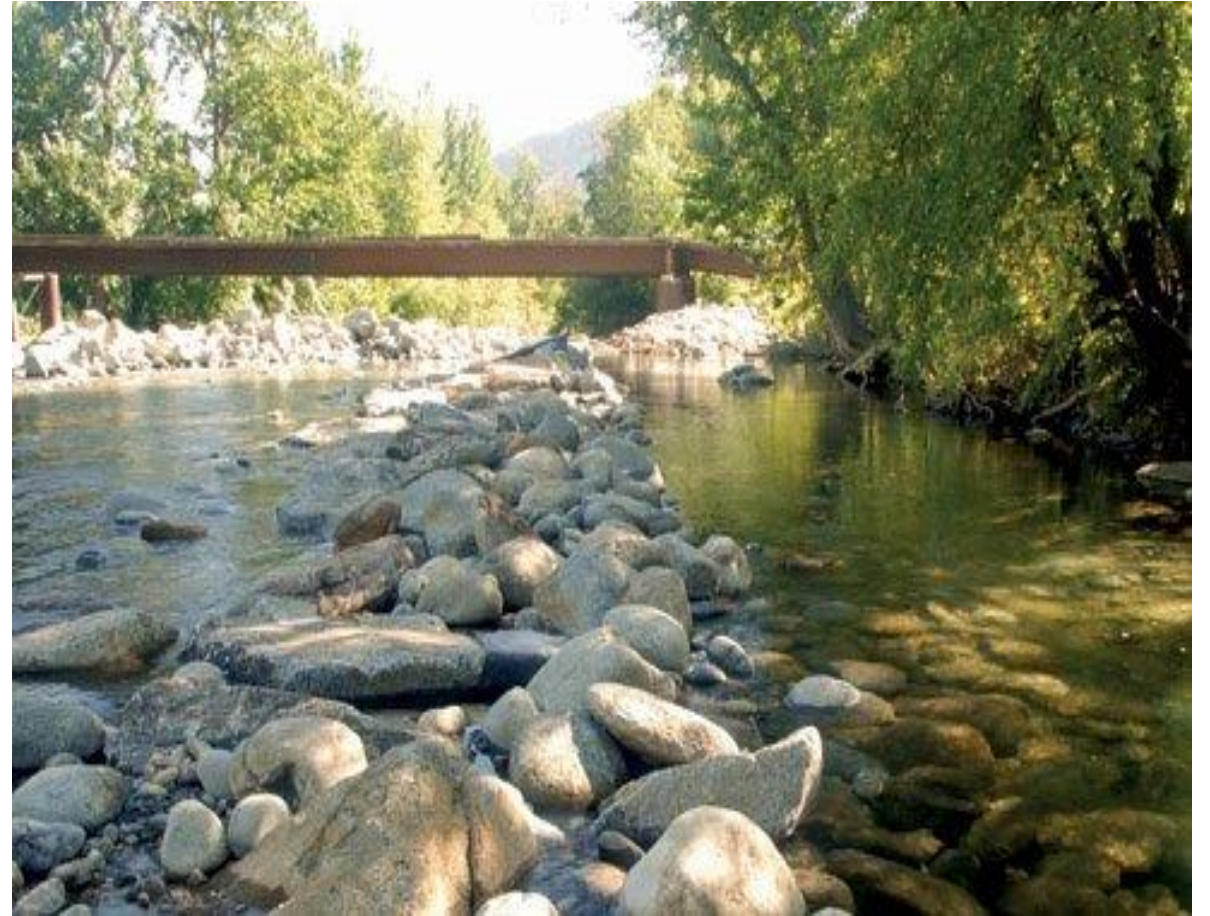
- Includes representation from multiple backgrounds and water uses
 - Conservation
 - Private Irrigation
 - Wildlife
 - Fisheries
 - Government
- Fieldwork will be completed during the Summer of 2021.
- Fieldwork will be completed by an ID team that consists of the same members at each site for consistency.

Assessment Criteria – Pictures

1. Upriver from Structure
2. Downriver from Structure
3. Diversion Structure Entrance
4. Diversion Structure Exit
5. Birds Eye View
6. Measuring Device(s)
7. Waste Gate(s)
8. Wings or Walls
9. Other Noteworthy Occurrences

Assessment Criteria - Structure Information

- Diversion Structure Type and Size
- General Description of Structure (Placement and Levelness)
- Functionality of the Diversion
- Wings or Walls in the River
- Noted Needed Maintenance or Improvements



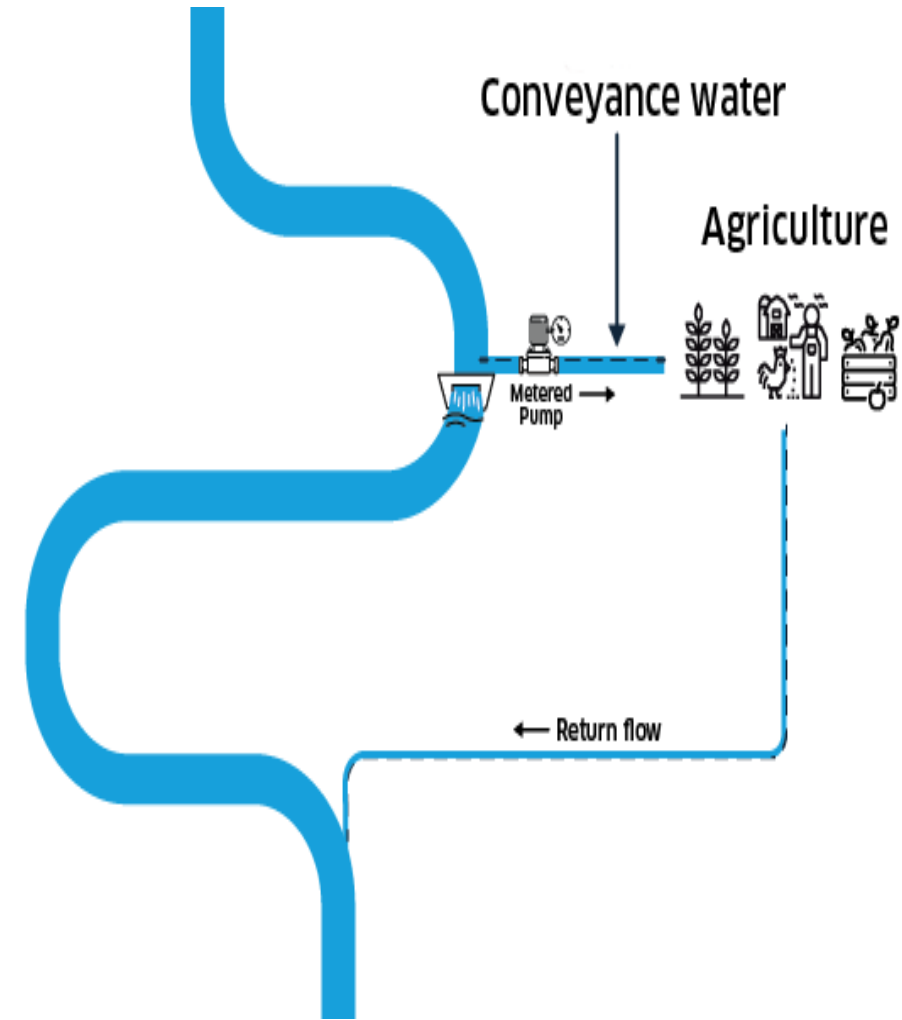
Assessment Criteria – Structure Information (Cont.)

- Measuring Device(s)
 - Type
 - Size
 - Functionality
 - Distance from Diversion Point to Measuring Device(s)



Assessment Criteria – Structure Information (Cont.)

- Waste Gate Information and Comments
- Other Comments about the Diversion



Assessment Criteria – Environmental

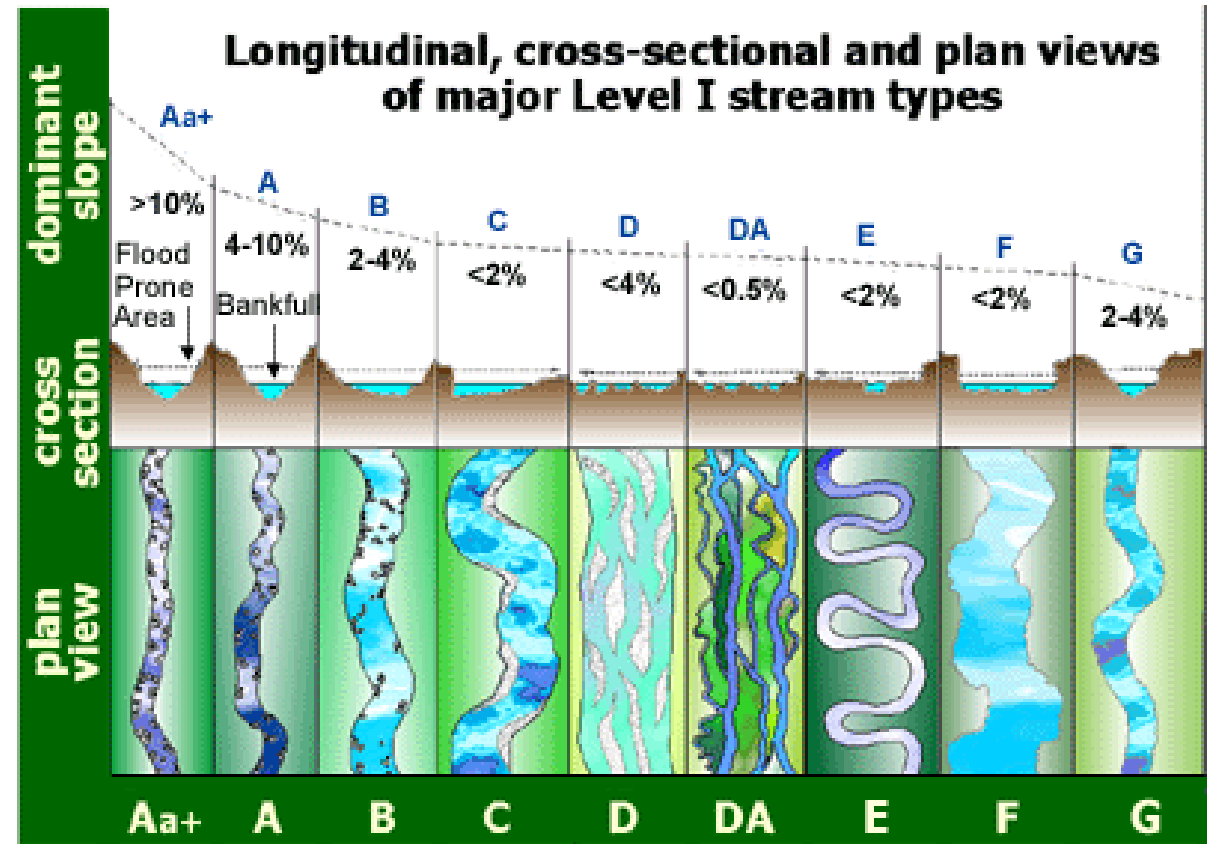
- Plants and Vegetative Cover
 - Native Species
 - Invasive Species
- Information Gathered:
 - Species List
 - Abundance Ranking (1 Rare-4 Abundant)

Assessment Criteria- Environmental (Cont.)

- Fish Entrainment and Passage Around Structure
- Information Gathered:
 - Is movement restricted and to what degree?
 - What prevention measures are present?

Assessment Criteria – Environmental (Cont.)

- Geomorphology
 - Erosion Around Structure: Ranked 1-4
 - Local Sediment Load: Actual Measurement
 - Site Stability: Ranking 1-4
 - Rosgen Stream Classification: Specialized Ranking System



Assessment Criteria- CDSS

- Online Water Rights Information
 - Location of Diversion
 - Decree Date(s) and CFS Amount(s)
 - Total Absolute Water Right
- Information from the Colorado Decision Support System website.

Questions and Discussion

- Kendra Young
- District Conservation Technician
- Kendra.Young2@USDA.gov
- 1-970-693-3006